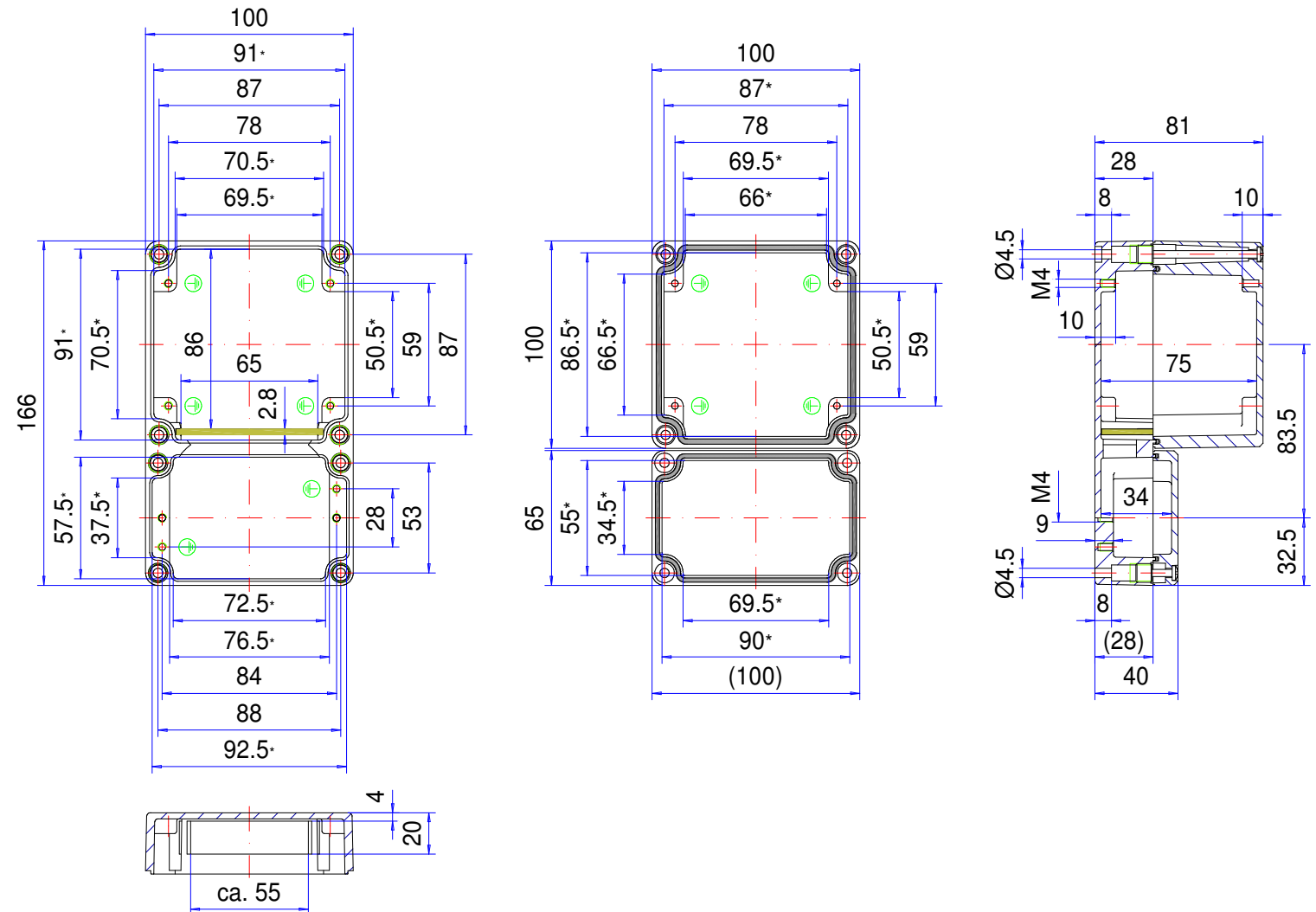



Enclosure series aluTWIN

Type: AT 100

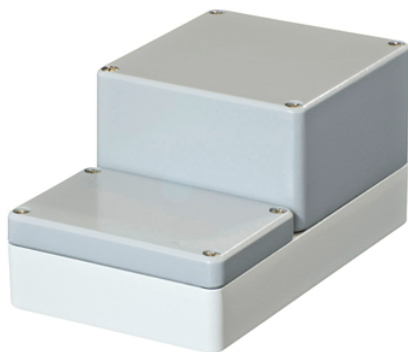
Material-No.: 104.100.000



* Please note: Mould slope for casting ejection, dimensions in the amount of the bottom!

Enclosure material	GD-AI Si 12 (DIN 1725)		Weight	770 g
Lid screws	8x stainless steel 1.4567 (V2A), captive		Earthing screws	6x M4x6, copper-plated
Gasket	2x TPE moulded gasket, silicone-free, black		Coating	Powder coating RAL 7040, window grey + RAL 7035, light grey
Ingress protection	IP66 EN 60529		Tolerance	GTA 13/5 DIN 1688-4 (outside dimensions $\pm 0,5\text{mm}$)

104.100.000
aluTWIN AT 100



Product overview

Material	Aluminium
Color	RAL 7040, RAL 7035
Length (L)	166 mm
Width (W)	100 mm
Height (H)	81 mm
Weight (g)	770 g

aluTWIN

THE TWO-CHAMBER ENCLOSURE

IP 66, Optional: IP 67

The key product features:

- Enclosure material: diecast aluminium
- Enclosure surface: lid powder coating, RAL 7040, bottom powder coating, RAL 7035
- Design with equally high covers
- Secure connection technology due series terminals in a connection space opened separately
- Chambers can be separated by isolation wall
- Lid screws in stainless steel 1.4567
- Enclosure seal: TPE moulded gasket, silicone-free, connection space: O-ring gasket (CR)

aluTWIN is a range of high-performance dual-chamber diecast aluminium enclosures for heavy duty electronics and electrical equipment.

The design offers the option of installing the electronics and terminals in separate sections to protect them from each other during installation and servicing. The enclosures are based on our aluNORM product range and are weatherproof and watertight to IP 66. Threaded screw bosses are provided inside for fitting circuit boards, mounting plates etc.

We can supply aluTWIN enclosures fully customised to your requirements.

Enclosure sizes

4

Additional info

Secure connection technology due to the printed circuit boards or series terminals in connection spaces that can be opened separately

Both chambers can be separated with the isolation wall included

Different lid variants

Specially developed external mounting brackets made from diecast aluminium

Enclosure

Diecast aluminium alloy

EN AN-44300 DIN EN 1706

(GD Al Si 12/DIN 1725)

1° mould slope for casting ejection > internal circumference dimensions decrease by 1° towards enclosure bottom.

Fastening

Space-saving single-channel technology for lid and fastening screws outside of the enclosure interior

Internal mounting

Fastening thread in lateral bars on the enclosure base.

Ingress protection

IP 66 / EN 60529

Optional: IP 67

Gasket

Chloroprene O-ring gasket (CR)

or TPE moulded gasket, silicone-free

Optional: Silicone gasket

Lid screws

Stainless steel 1.4567, captive

Surface

Powder coating

Bottom: RAL 7035, light grey

Lid: RAL 7040, window grey

Optional: Special colours

Optional: Corrosion protection

Customising

Learn more about our [full customising service for installation-ready enclosures](#)

Full-Service-Products

Customization according to your wishes.



Our *passion* is enclosures.



Expert advice

Everything begins with individual advice. We'll be pleased to support you with your project and find solutions for every requirement. Customer-specific solutions are our speciality.



Sample service

Test our products with your internal mounting. We'll be pleased to send you a sample enclosure for inspection with no strings attached.



Drilling

We'll manufacture every enclosure for you according to your exact specifications – whether they involve precise drilling or large tolerance.



Milling

Thanks to our modern CNC production, we can quickly and efficiently mill custom-fit cut-outs and contours to match your exact specifications.



Engraving

Our services also include engraving your logo and other elements, which we can of course perform in any colour you desire.



Lasering

We can process stainless steel enclosures and plates quickly and reliably according to your individual requirements thanks to our in-house lasering centre.



Powder coating

We can powder coat enclosures, command enclosures and suspension systems in any RAL colour you desire. Custom colours are of course also possible.



Painting

We can also paint all our enclosures in any RAL colour you desire. The application of primer and special colour structures are possible, as well.



Serigraphy

If desired, we can apply your logo and lettering or other markings using serigraphy printing.



Digital printing

Digital printing is particularly worthwhile for low-volume orders and for realising complex patterns or images.



EMC enclosures

We offer our conFORM low-price standard EMC enclosure to protect your internal mounting against electromagnetic radiation. On request, we can also supply an EMC-compliant version of any other ROLEC enclosure.



Displays

We are able to offer the right made-to-measure display for all our enclosures – in varying sizes and degrees of robustness depending on the application.



Accessories

ROLEC's portfolio also includes matching front plates, mounting plate, supporting rails and terminal blocks as well as a range of cable glands, blanking plugs etc.



Assembly

Would you like to have all your components supplied already assembled? No problem. Our assembly team will be pleased to perform all assembly work on your behalf.



Our Service

If you have any requirements for services not listed here, please ask us. Customer-specific solutions are our speciality. We also are keen to take on unusual tasks.

We will help you with those challenges that many others would give up on.